



**THE PARISH MAGAZINE**  
**Ashford in the Water**  
**and Sheldon**

<https://ashfordparishchurch.com>

**October 2023**



**Ashford Services**

Sunday 1<sup>st</sup> Trinity 17 9.45am Congregation led  
Sunday 8<sup>th</sup> Trinity 18 9.45am Sung Eucharist and Harvest Festival  
Sunday 15<sup>th</sup> Trinity 19 9.45am Sung Eucharist  
Sunday 22<sup>nd</sup> Trinity 20 9.45am Sung Eucharist  
Sunday 29<sup>th</sup> Last after Trinity Benefice service at All Saints, Bakewell

**Sheldon Services**

Sunday 1<sup>st</sup> 3pm Harvest Family Service

**Baptisms**

10<sup>th</sup> September George William Glossop  
24<sup>th</sup> September Nancy Jane Templeman



**Harvest Festival Holy Trinity 8<sup>th</sup> October at 9.45am**

**Items suitable for the food bank will be gratefully received.**



**Dried foods can be brought and left in church, under the table by the door. Any fresh food should be brought along on the morning of Saturday 7<sup>th</sup>.**

**Thank you!**

A prayer for Harvest:

**Lord of the Harvest,**

**You crown the year with your goodness**

**and you give us the fruits of the earth in their season:**

**grant that we may use them to your glory,**

**for the relief of those in need**

**and for our own well-being. Amen**



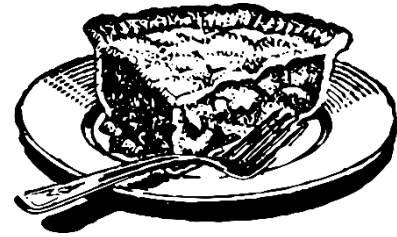
## **ASHFORD HARVEST SUPPER**

**Saturday October 7<sup>th</sup> at 7pm  
in the War Memorial Institute**

**Tickets £10**

**There will be a raffle – prizes gratefully received and can be brought along on the night.**

**Please bring your own drinks and glasses.**



**Ticket sales are now closed but there may be space for a few more. If you forgot to buy your ticket but would like to come along, please ring me, Linda, on 01298 871647 by Thursday 5<sup>th</sup> October.**



**Sheldon Harvest Supper and Bingo**

**Tuesday 3<sup>rd</sup> October 7.00pm**

**in The Cock & Pullet**

**with short Harvest Service**

**Please ring Kath for details (814292)**

## Dear Friends

Hearing Nat King Cole singing 'Autumn Leaves start to fall,' and with daylight becoming shorter, our minds begin to move into thinking that we need to take the foot off the pedal a bit more to appreciate the beautiful autumn colours and the change in nature around us. However, the pace of life and the things that often take up our time, even if we resist the appearance of Christmas in the shops, make us feel guilty if we want to admire the autumn sunsets or notice the smells of autumn, or the light changes, as we rake the never ending supply of fallen leaves.

Autumn can see for some people the onset of mood change as the nights lengthen and people are less active or seen as the temperatures drop, deepening a sense of isolation and loneliness. All the more reason to be aware of our neighbours and to try and make contact with those who may live on their own to offer a little warmth of friendship and support. It is also important that we take care of ourselves, especially our mental health, and as autumn is a season replenishing the earth with leaves that fall and wild life gathering for the winter, so we need



a bit of replenishing and time for others as well as for ourselves.

Traditionally during the autumn churches are decorated beautifully for the Harvest Festival Thanksgiving that is offered by the local farming, horticultural, growing and retail communities for God's goodness to us reflected in the harvest of people's skills, energy, dedication, commitment, creativity and enterprise. In the thanksgiving is also a pledge to share what we have and to be generous within our lives with those particularly are in need, or who are struggling locally or across the world.

With our eyes fixed on the tasks in hand and our minds consumed by worry or the tasks that are piling up to attend to, it is quite possible to let Autumn exist but slip by without allowing it to replenish and inspire us, giving us permission to stop and take in the sights, smells and beauty of the season.

Every  
blessing.

Tony





Lewis and Hannah (née Sterritt) Rigley after their wedding at Holy Trinity Church on a gloriously hot day on 10<sup>th</sup> September.

### **SHELDON JOTTINGS**

In conversation with a Doncastrian we were told that 'winter comes in on the back of the last horse of the St Ledger!' The saying was certainly true this year as directly after the race meeting ended the weather turned from warm and sunny to cool, cloudy, wet and windy, with only the occasional sunny interval, and has been so ever since. Perhaps not winter but certainly autumn is with us -



meteorologically speaking - on the 21<sup>st</sup>. Apart from a few stragglers, the swallows and house martins have left us and the gardens and landscape are taking on that autumnal look with berries on the bushes, fading flowers and the leaves on the trees just beginning to turn to those beautiful autumnal colours.

The grey squirrel(s) is getting bolder and we have seen it in the garden and in the street where it was suddenly spooked and dashed up the trunk of one of the trees so, so fast.

Hannah Sterritt and Lewis Rigley were married in Ashford Church on September 9<sup>th</sup>, just escaping the change in the weather. Hannah lived for much of her early life with us here in Sheldon, attending Lady Manners School before leaving to go to university.

The reception took place at Manor Farm and the sun shone and the sky was blue and for September the weather could not have been better. We wish the couple a happy and successful future together.

This year an unusually large number of villagers reached an age with a nought on the end. There were several 70 and 80 year olds and this

month Andrew L reached the grand old age of 30 and Claire celebrated her 50<sup>th</sup> birthday. Congratulations to them both, and best wishes to all our decadians (yes, we made the word up!)

It is perhaps worth mentioning the Repair Cafés which are now happening in various villages. The Bakewell one takes place on the 4<sup>th</sup> Saturday of the month at the Methodist Church Hall. So if you think you have something that perhaps could be repaired rather than thrown away, then do go there first to ask.

There will be a Parish Meeting on Tuesday October 10<sup>th</sup>. We are lucky here as we can all have our say on any subject and unlike elsewhere in local government we all have a vote. As usual there will be plenty to discuss and it provides a great opportunity to have a chat with friends and neighbours. We hope everyone will make an effort to attend and look forward to seeing you there!

As the Harvest Church Service has been cancelled on Sunday 1<sup>st</sup> October, a smaller Harvest Service will be held before the Pea and Pie Supper on Wednesday 25<sup>th</sup> October in the Cock and Pullet.

#### DIARY DATES

Tuesday 10<sup>th</sup> October - Sheldon

Village Hall at 7.30 pm – Parish Meeting

Wednesday 25<sup>th</sup> October – Cock and Pullet – A small Harvest Service before the Pea and Pie Supper

#### Ashford WI

In September we were delighted to welcome back Mike Higginbottom as our speaker. On this occasion he entertained and informed us with his talk, “The Big Apple”, an account of the history and architecture of New York. From Ellis Island to Central Park, Mike told us interesting facts and showed us lovely photographs. He left both those of us who had visited New York before and those who had never been, keen to acquaint themselves with “The Big Apple” (preferably with Mike as our guide!).

Also in September several members went to The National Arboretum. Here is Joyce’s account of their day:

#### Lest They Forget

Imagine a day interspersed with laughs and silliness, a train ride starting with giggles but ending in silence, a walk among memorials dedicated to those from the services who have been killed and pondering the endless sadness, heart aching sorrow and utter waste of war.



The above medley of emotions was experienced when eight lovely ladies from Ashford in the Water WI visited the National Arboretum in Alrewas, Staffordshire.

In 1994 an appeal was launched to fund a year-round national centre of remembrance in the UK, to ensure we never forget those who have served and sacrificed their lives. Only two years later the first trees were planted in former gravel workings bordered by the Rivers Trent and Tame. The story of the Arboretum had begun.



Opened in 2001, the Arboretum now contains at least 25,000 trees and 400 memorials representing the Navy, RAF, Army, the Police, Doctors, Nurses, Dentists, animals and many more who have served our country. In a quiet, tucked-away area stands a moving memorial to those Poor Souls, Shot at Dawn who are also remembered. During the following years a hill was built in the centre of the site and the Armed Forces National Memorial was created. The

monument is striking with its white, semi-circular walls. Walking up steps you pass between tall topiary trees, standing as if to attention. A central courtyard opens in front of you and you see names engraved on the walls. They are the names of all those who lost their lives on duty or in an act of terrorism since the end of the Second World War. Already there are over 16,000 people represented.

Bronze statues telling the story of war are placed against the wall on either side of the central area. At the 11th hour of the 11th day of the 11th month each year, a gap in the curved walls allows a shaft of sunlight to shine directly through onto a huge, central bronze wreath. Stewards tell the story of the sculptures, explaining everything they represent. It is moving, emotional, calming and terrible all at the same time.

The stillness and beauty of the place, combined with the horror and sadness of all that pointless loss made our visit one that none of us will ever forget.

### **Ashford in the Water Parish Council**

For information about the village and surrounding area, and the activities of the Parish Council, please visit <http://www.ashford-in-the-water-pc.gov.uk>

# PENROSE INTERIORS



Interior Design | Soft Furnishings | Re-upholstery | Curtains & Blinds |  
Poles & Tracks | Wallpaper | Fabric | Paint | Giftware | Home Accessories

  FIND US ON FACEBOOK & INSTAGRAM

A: Broome's Barns, Pilsley, Nr Bakewell, Derbyshire, DE45 1PF T: 01246 583444  
E: [sales@penroseinteriors.co.uk](mailto:sales@penroseinteriors.co.uk) W: [www.penroseinteriors.co.uk](http://www.penroseinteriors.co.uk)

Opening Times: Monday – Saturday 10am – 5pm

Located in Pilsley village, near the Chatsworth Farm Shop and next to the Devonshire Arms pub.





**TEVE WALTON  
ELECTRICIAN**

- Efficient and Reliable
- No Job Too Small
- All Work Fully Guaranteed
- PAT Tests

Email  
steve.walton.electrical@gmail.com

Mobile  
07766557691

Hathersage

**Hillsprings**

**LAUNDRY**

THE DALE, STONEY MIDDLETON,  
HOPE VALLEY, DERBYSHIRE, S32 4TF.  
www.hillsprings.co.uk E-mail: enquiries@hillspringslaundry.co.uk  
Telephone: 01433 631442

**AGENT FOR DRY CLEANING**

SERVICE WASHES BED AND BATH LINEN

TABLE LINEN WORKWEAR & OVERALLS

**IRON ONLY SERVICE**

UNIFORMS SLEEPING BAGS

SPORTS KITS DUVETS

Open Monday - Friday  
7am - 5pm

Collection and delivery available  
within a 20-mile radius of Stoney Middleton

**Mobile Gentlemen's &  
Boys' Barbers**



Experienced & reliable.  
At a time and place to suit  
your busy life.

Teresa  
TEL: 07974960209

**Drew's Garage**

SERVICING, REPAIRS  
and TYRES



**Please Contact Andrew For  
All Of Your Motoring Needs**

07538441006  
drewsgarage205@gmail.com

**SHELDON- DE45 1QS**



Drewsgarage



## Thornhill House



We are writing to ask for your support for your local care home. Many of you will be aware of Thornhill House in Great Longstone. It is a 19 bed Care Home run by a charitable trust on a 'not for profit' basis. Molly Thornhill founded it to provide a Home for people in the local community so that no one had to move away from their local friends and families to a Care Home far away. This continues to be central to its aims. In the past year, in response to identified need, respite care is available.

Covid had the inevitable effect of semi-isolating the residents of Thornhill House from visitors and the community. Outings were curtailed, no volunteers were allowed in the home and consequently the activities program for the residents was much reduced. Now that the home is fully open again, we are very keen to expand our program of activities for the benefit of all the residents. We are looking for volunteers to help and join in with this. Many of our residents benefit greatly from the support and encouragement of volunteers. You may well learn a new craft in doing this or take part in new games and enjoy

quizzes. And you will certainly be very much appreciated by staff and residents alike. We are always open to new ideas for activities, and we would love to hear about any from you. Also anyone interested and willing to give relevant talks or presentations will be very welcome.

In addition, there are some residents who have few visitors. If you could give time to visit every so often, that would be very welcome.

For more information on any aspect of the above or if you have any other questions about Thornhill House, please contact Claire White, Administrator at [administrator@thornhillhouse.org.uk](mailto:administrator@thornhillhouse.org.uk) or telephone 01629640034

	<p><b>The Joinery Workshop</b> (Derbyshire) Ltd.</p> <ul style="list-style-type: none"><li>• Quality, purpose made joinery</li><li>• Doors, windows, fitted furnishings</li><li>• Made to measure</li><li>• Traditional &amp; contemporary</li><li>• Range of woods and finishes</li><li>• Estimate on request</li></ul> <p>01629 813633 07835238160 <a href="mailto:joineryworkshopltd@gmail.com">joineryworkshopltd@gmail.com</a> Or visit the workshop: Hassop DE45 1NW</p>
--	--

## An Introduction to your local milk delivery service

### Bakewell Dairy

We can deliver all your milk, eggs and cream requirements.

We deliver Monday / Wednesday / Friday

Pint Bottled Semi Skimmed Milk (Peak District Dairy) 60p	Pint Bottled Whole Milk (Cox Brothers Great Longstone) 60p
Eggs ½ Dozen free range eggs £1.10	Pint Bottled Skimmed Milk (Peak District Dairy) 60p
Cream ½ pint Double Cream (Longley Farm) £1.20	Cream ½ pint Single cream (Longley Farm) £1.10
Fruit Yoghurts (Longley Farm) 38p	Pint Fresh Orange Juice 75p
1ltr Carton Orange Juice £1.10	1ltr carton Cranberry £1.10

Please contact Colin on Phone / Text 07711 900030

Email [csjcolin@btinternet.com](mailto:csjcolin@btinternet.com)

## ***Chatsworth Plumbing & Heating Ltd***

- **BOILER INSTALLATIONS & GAS SERVICING**
- **LANDLORD CERTIFICATIONS**
- **INSTALLATION OF SOLID FUEL FIRED CENTRAL HEATING OR HOT WATER SYSTEMS**
- **INSTALLATION OF OPEN FIRES & SOLID FUEL FIRED APPLIANCES**
- **UNDERFLOOR HEATING**
- **SOLAR HOT WATER SYSTEMS**
- **BATHROOM INSTALLATIONS**

Friendly, local and prompt service by qualified personnel.  
Customer satisfaction a priority.

For a free consultation or quotation please phone:

**Tel: 01629 733 188**

**Mobile: 07739 797 644**

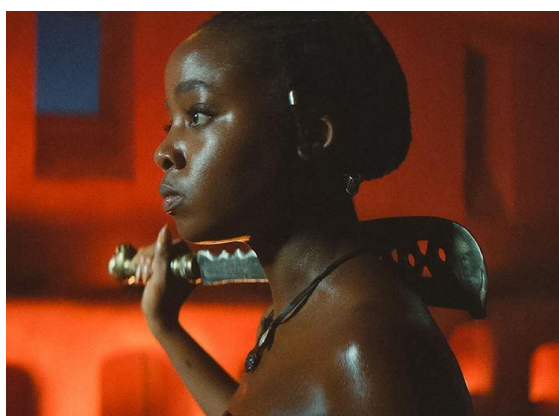


**Bakewell and Ashford Film  
Society (BASH)**

**THE WOMAN KING**

**SUNDAY OCTOBER 8<sup>th</sup>  
2023**

**7.30 pm at the Medway  
Centre, Bakewell**



*The Woman King is the remarkable story of the Agojie, the all-female unit of warriors who protected the African Kingdom of Dahomey in the 1800s with skills and a fierceness unlike anything the world has ever seen. Inspired by true events, The Woman King follows the emotionally epic journey of General Nanisca (Oscar®-winner Viola Davis) as she trains the next generation of recruits and readies them for battle against an enemy determined to destroy their way of life. Some things are worth fighting for.*

BASH's aim is to meet in a friendly atmosphere showing a variety of

new, classic and foreign films. We give an introduction to each film and refreshments are served during an interval. Accessibility is important to BASH: The Medway Centre is wheelchair friendly and we provide film subtitles and a hearing loop. You can join BASH Film Society via our website, sign up on the night or you can telephone the membership secretary Joy Thrower 01629 814863. Membership is £24 for 10 films. As a member of the film society you will also be entitled to borrow for two weeks any DVD or BluRay from our ever growing library of films (see [www.bashfilms.org.uk](http://www.bashfilms.org.uk)). We look forward to welcoming you on **Sunday October 8th** at 7.30pm.

**A notice from Ashford in the  
Water Parish Council:**

**No Parking Notices**

Parking continues to be a significant problem within the village: the penalty of living within a much sought-after area which attracts many visitors on a daily basis. The parish council has been made aware of the increasing number of 'no parking' notices appearing outside residents' homes. Whilst it is very frustrating when visitors park directly outside your property, may we remind residents that you cannot prevent members of the public from

doing so. Any member of the public is entitled to park on a public highway where it is safe and legal, and should not be challenged or reprimanded.

Your continued cooperation is appreciated.

## Farming News



We have had our first disaster with the rape seed. It was sown in mid-August and germinated well due to the damp warm conditions. Two weeks ago Neil went to look at the field and it had been decimated by the flea beetle. This is a small black beetle which loves chewing on any kind of brassica, and rape is of the brassica family. The pesticide we have used is now banned by the EU, and all over the country farmers are trying to grow a crop alongside rape so the beetle will choose that rather than rape leaves. Adam Henson grew buckwheat for the beetle to chew on. Other plants are marigold and nasturtium which prevent devastation. The ban on neonicotinoids was imposed last year aiming to protect bees from damage caused by the pesticides. Rape is grown as a break crop from continuous growing of wheat and barley so other crops such as maize are now being sown rather than

rape. In fact on a recent journey to Surrey last weekend we saw only a couple of fields of rape and both were very patchy. Obviously this will make the price go up but we have to persevere and grow it for the oil business. Fingers crossed second time around.

We still have some oats to combine on the A6 going up to Buxton past the fish ponds. This crop has done very well and looks well but we could just do with a good dry week to get it in the barn. We have been told we are to expect a late Indian summer but are still waiting. Fingers crossed it will get better in October.

## POETRY CORNER

*Many thanks to the reader who submitted this poem:*

### THE BROKEN SOUL

They thought that I was down and out  
They thought that I was done  
The more they kept me on the ground  
The more I looked towards that sun

And as those rays of light shone down  
To warm my aging face  
I found my shoulders rise once more  
As I stood in humble grace

No tears, no regrets, no shattered life  
Will destroy my battered soul



Instead I'll fight and pursue each  
dream

As I move towards my goal

The ridicule, the words of harm  
The insults and the pain  
Endured by a man whose defiant spirit  
Fights back to erase his shame

When a man is lost and feels all alone  
He must look within himself  
And rid his thoughts of any doubt  
That his life is blessed with wealth  
No gold, no silver to weigh him down  
Only pennies small and few  
But in his heart he carries the belief  
That his life can be renewed

Blows and strikes may knock you over  
In a life that's tough and hard  
But a winner will find inside his mind  
The strength to rebuild his guard

So look towards that sun my lad  
When your battles near their end  
And remember this as you rise again  
That a broken soul can mend

## POT LUCK

### Canadian Butter Tart



Thank you to  
Elizabeth Stone for this tasty  
seasonal recipe from Canada. It  
makes a great dessert or teatime  
treat.

Makes 20 mini tartlets.

## Ingredients:

1 375g pack of ready rolled pastry  
(puff pastry works well)

75g unsalted butter

2 tablespoons cream or milk

1 teaspoon vanilla essence

200g light or dark soft brown  
sugar

200g sultanas

1 egg beaten

1 tbsp flour



Lightly grease cupcake baking  
trays with capacity for 20 tartlets.  
Using a round pastry cutter cut 20  
rounds of pastry and line the  
trays.

Melt butter in small saucepan.  
Remove from heat and add sugar,  
then milk and egg. Add the other  
ingredients, return to the heat  
and boil for 2 minutes.

Spoon the sauce mixture into the cases, without overfilling.

Bake at 180°C for 20-30 minutes, until pastry is nicely browned.

Serve warm or cold. Goes well with cream or ice cream.

Optional – garnish with half a pecan or half a date.

## PUZZLE CORNER



### 1. OLD WEST

ACTION is an anagram of which film star?

2. Can you think of a common 3-letter word that can be prefixed by all these letters? FRI L SP B AM

3. What phrase is represented here? ARREST  
PLACED

4. Can you make a musical word from these two? RICHARD  
HOPS

5. Name a 6-letter ailment that begins and ends with a vowel and has no other vowel in it.

6. What flower is represented here? M  
E

*Answers on last page.*

## BAKEWELL MEDICAL CENTRE

[www.bakewellmedicalcentre.co.uk](http://www.bakewellmedicalcentre.co.uk)

01629 816636

### Normal Surgery Opening Times:

Monday to Friday 8am to 6.30pm (unless it's a bank holiday)

We do not close for lunch.

**The surgery will be closed for training at 1.30pm on the 2<sup>nd</sup> Wednesday of each month.**

**Whitworth Urgent Treatment Centre** at Whitworth Hospital is open from 8am to 8pm 7 days a week.

Please remember if you need to seek medical advice and the surgery is closed contact **111**.



## **Baslow Health Centre – Church Lane, Baslow**

[www.baslowhealthcentre.co.uk](http://www.baslowhealthcentre.co.uk)

**Appointment Times:** Clinicians are still available for consultations and medical advice. Please contact the surgery and a GP or Nurse will call you back to discuss your concerns and if necessary arrange to see you in person. Many problems can be dealt with over the telephone.

**Patient Online:** Have you registered to use the online service? This allows you to book or cancel appointments online (during normal service) and order your repeat medications. You can also request access to your Summary Care Record, and Detailed Coded Data contained within your medical records. You can also look at your test results.

### **Telephone Numbers:**

Reception: 01246 582216      District Nursing Team: 01332 564900

Health Visitor: 01246515100

**Normal Surgery Opening Times** Monday, Tuesday, Wednesday, Thursday & Friday 08:00am to 6.30pm, (Closed Bank Holidays) (*Phones 8.00am – 6.30pm Mon to Fri*)

**Ordering Repeat Medication** - You can order repeat medications in the following ways:

- In writing or with our on-line access service
- Return your repeat request form to surgery by Post

**Please allow three working days before collection and collect between 8am and 5pm**

**Prescriptions can be collected from reception inside the surgery.**

**Samples** – if you need to leave a sample with us please ensure it is labelled with your name and date of birth and returned in a bag if provided either through the letterbox or at reception.

**Test Results** – **Please ring for test results after 2.30pm** as we do not receive test results back from the hospital until lunchtime.

For Urgent Calls when we are closed, please call **111**



Need help or advice?

**Sarah Dines**  
**Member of Parliament for**  
**Derbyshire Dales**

You can write at any time to:

Sarah Dines MP, House of Commons  
London, SW1A 0AA

Phone: 020 7219 6660

Email:  
Sarah.dines.mp@parliament.uk

Website: [www.sarahdines.org.uk](http://www.sarahdines.org.uk)

***Sarah Dines MP, working hard for***  
***Derbyshire Dales***

## **PUZZLE ANSWERS**

1. Clint Eastwood    2 -END    3. Placed under arrest
4. Harpsichord    5. Asthma    6. Anemone (An M on E!)

**The deadline for the November magazine is 25<sup>th</sup> October 2023.**

**Please send any poems, photos, articles, recipes, puzzles, animal profiles, thoughts or reminiscences to [stone.mary@sky.com](mailto:stone.mary@sky.com).**

**Thank you!**